

The background features a gradient from light green at the top to dark blue at the bottom. It is overlaid with various circular and semi-circular patterns, including dashed lines, solid lines, and arrows, suggesting a technical or data-driven theme. A prominent circular scale with numerical markings from 140 to 260 is visible on the left side.

# DISRUPTIVE TECHNOLOGY AND DISRUPTIVE INNOVATION

JASON SCOTT

HEAD OF DIGITAL TRANSFORMATION, GRACEKENNEDY GENERAL  
INSURANCE

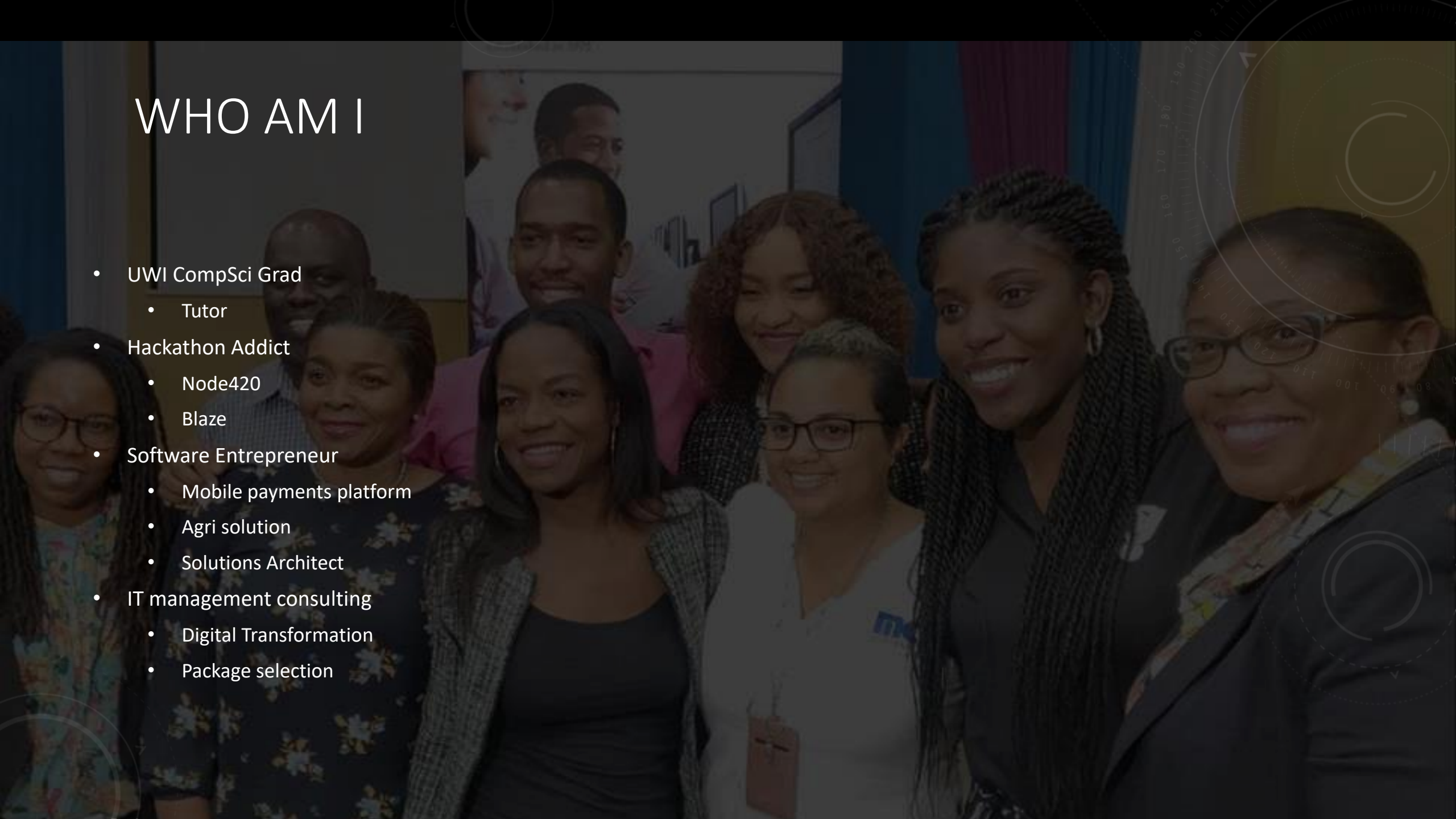
DEPUTY PRESIDENT, JTDA (FKA JCS)

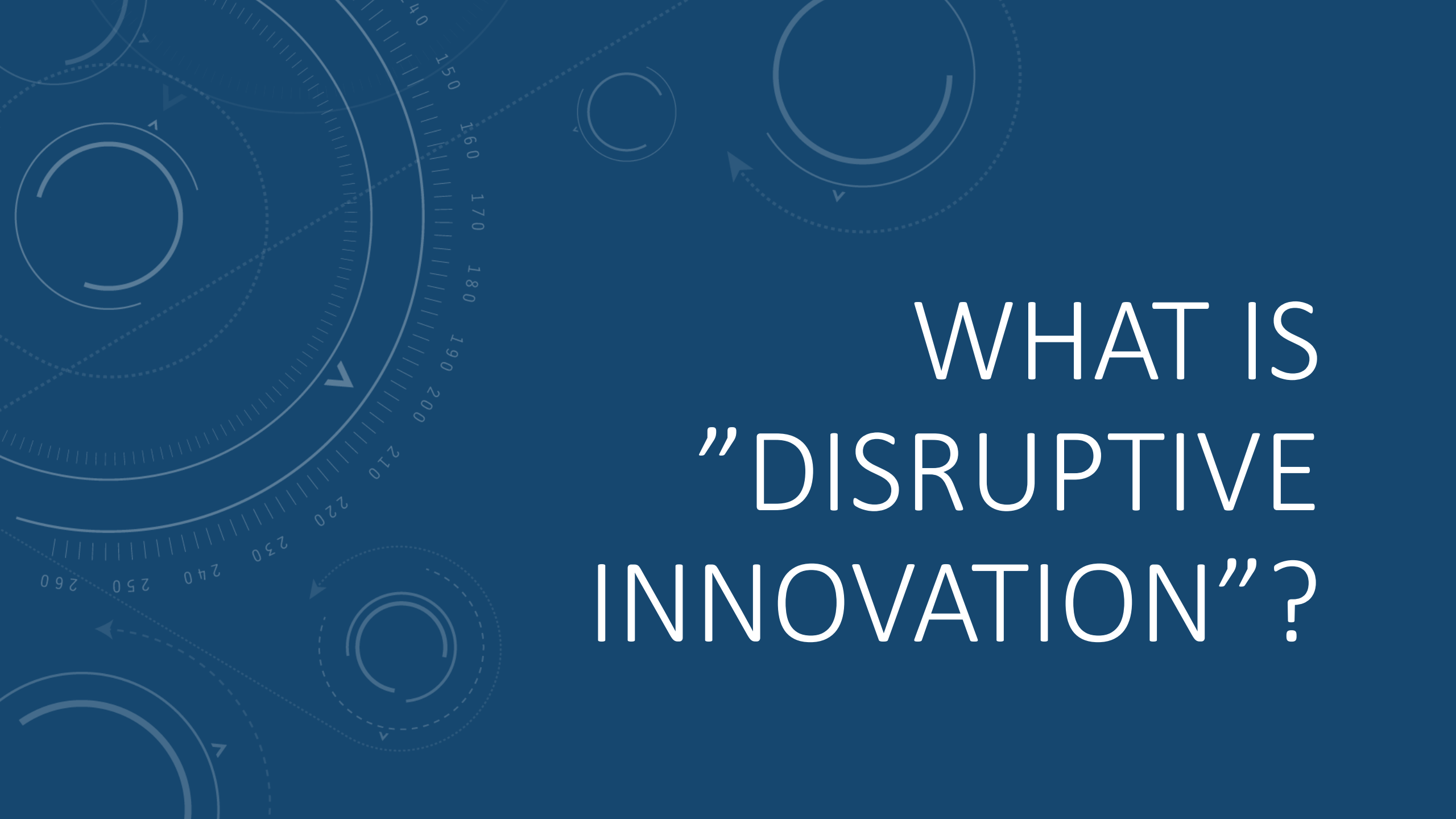
GREETINGS FROM THE  
JAMAICA  
TECHNOLOGY AND  
DIGITAL ALLIANCE  
(FKA JCS)



# WHO AM I

- UWI CompSci Grad
  - Tutor
- Hackathon Addict
  - Node420
  - Blaze
- Software Entrepreneur
  - Mobile payments platform
  - Agri solution
  - Solutions Architect
- IT management consulting
  - Digital Transformation
  - Package selection



The background is a dark blue gradient with several faint, light blue circular gauges and arrows. The gauges have numerical scales and arrows pointing in various directions, suggesting a technical or scientific theme. The text is centered on the right side of the image.

WHAT IS  
"DISRUPTIVE  
INNOVATION"?



# WHAT IS "DISRUPTIVE INNOVATION"?

- An innovation that affects and disrupts the normal operations of any market eventually displacing it

But isn't that "innovation"?

- Innovation is the practical implementation of ideas that result in the introduction of new goods or services or improvement in offering goods or services.

Sustaining Innovation



Disruptive Innovation



WIKIPEDIA  
The Free Encyclopedia



The background is a solid blue color with a complex pattern of white and light blue circular elements. These include concentric circles, dashed lines, and solid lines, some of which form partial rings or arcs. Interspersed among these patterns are various numerical values, such as 150, 160, 170, 180, 190, 200, 210, 220, 230, 240, 250, and 260, arranged in a somewhat radial or grid-like fashion. The overall aesthetic is technical and futuristic.

# TECHNOLOGY LANDSCAPE IN JAMAICA

# TECHNOLOGY LANDSCAPE IN JAMAICA

Heavy focus on software

- Ease of access to information on the net
- Courses in schools






# TECHNOLOGY LANDSCAPE IN JAMAICA

There's hardware too:

- PreeLabs,
- FarmCredibly
- DIY
- 3D Printing and Robotics

Import limitations



The background is a dark, textured surface featuring several overlapping circular elements. On the left side, there is a large, semi-circular scale with numerical markings ranging from 140 to 260 in increments of 10. The scale is composed of fine tick marks and larger, bolded numbers. Several concentric circles and arcs are scattered across the frame, some with arrows indicating a clockwise or counter-clockwise direction. The overall aesthetic is technical and futuristic, suggesting a theme of engineering, data, or technology.

DISRUPTIVE TECHNOLOGY IS  
ONLY “DISRUPTIVE” BECAUSE  
OF DISRUPTIVE INNOVATION

---

Identify common  
problems

---

Jamaica is a testing  
ground for ANY  
developing country

---

Solve local, think  
global

# DISRUPT YOUR INDUSTRY



---

“If you had 1 million dollars,  
how would you solve the  
problem”

---

Moonshoot

---

Fail fast

---

Don't stop failing until you  
solve the problem

---

# DISRUPT YOUR INDUSTRY





# KEEP A PULSE ON TECH TRENDS

---

Blockchain

---

Big Data/Machine Learning

---

IoT

---

RPA/OCR

# TECHNOLOGY IS ACCESSIBLE

---

Cloud computing gives everyone a supercomputer

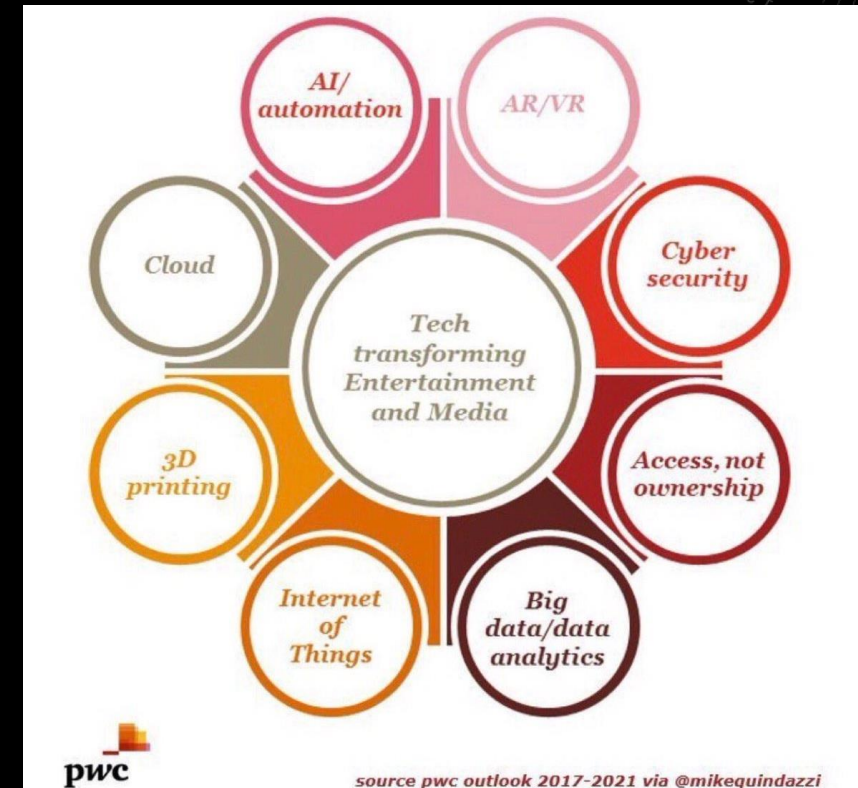
---

DIY YouTube for engineers

---

Join the community

# DISRUPT YOUR INDUSTRY





Standard Open  
Data Initiative



Digital Signatures



SR&ED



Realtime Payment  
Network

# LIMITATIONS OF THE CURRENT SYSTEM





Healthcare



Legal



Insurance



Finance



Manufacturing and  
Distribution

# INDUSTRIES RIPE FOR DISRUPTION



# GRANTS, FUNDING OPPORTUNITIES, & PARTNERSHIPS

If you want to go fast, go  
alone;  
If you want to go far, go  
together.





# KEY TAKEAWAYS

- Its not about the tech, its about the problem the tech solves
- We need to increase digital literacy so people are more aware of the uses of technology
- Join the JTDA to keep a pulse on tech
- There needs to be incentives in place to encourage innovation
- Public Private partnerships are the way forward

The background is a solid blue color with several white circular and semi-circular patterns. On the left side, there is a large circular scale with tick marks and numbers ranging from 140 to 260. Other smaller circles and arcs are scattered across the page, some with arrows indicating direction.

# THANK YOU

[HTTPS://LINKEDIN.COM/IN/SKALLY](https://linkedin.com/in/skally)

JASON@SKALLY.ORG